

POWERLOOKING: STRENGTHENING THE DENTAL EYE

A Guide to Assessing Esthetic Smiles



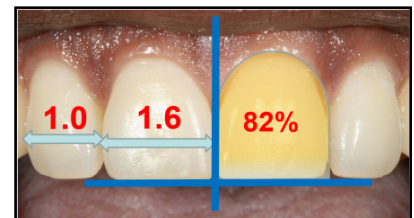
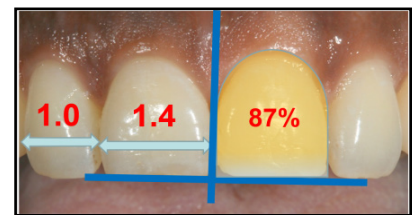
A beautiful smile.
Where to begin...?

Understanding the determinants of dental esthetics is the starting point to achieving an exceptional cosmetic result. In this Esthetics 101 course, Dr. Volker shares the principles of smile design, proportion analysis and color elements. The fundamental mathematical concepts associated with beauty are presented in a manner that is easy to comprehend and use. Effective communication skills for explaining the desired result with the laboratory are discussed. By reviewing clinical case studies, attendees will learn what to look for as they develop and exercise their 'dental eye'.

This course will provide attendees with the foundation necessary to objectively evaluate dental esthetics and immediately apply these principles to daily practice.

Course Objectives

- Apply principles of smile design and analysis of proportions
- Integrate mathematical algorithms of dental esthetics to smile design
- Understand the impact of shape and texture on tooth form
- Utilize hue, value and chroma to determine color for anterior restorations
- Understand the components of the polychromatic incisal edge
- Effectively communicate desired outcomes to the patient and laboratory
- Correct the "non-esthetic" smile



ARTHUR R. VOLKER, DDS, MSED
— MAKING PREDICTABLE HAPPEN —

646-729-6721

volkerdds@gmail.com
www.dentcaredentaloffice.com

Audience: Dentists
Half-day Lecture Format